

Approach to Learning



Approach to Learning - Cyclic

✦ Awareness - Motivation

✦ Experience

✦ Interpret í new knowledge

✦ New meaning

✦ Action

From



To

Partnerships
that are
cooperative

Partnerships
that are
collaborative



From

To

Partnerships
involving
knowledge
transmission

Partnerships
involving
knowledge
creation

partnerships



From

To

Partnerships
that are
supervisory

Partnerships
involving
critical
friendships/
coaching /
mentoring

partnerships



From

To

Partnerships
that are
theory driven

Partnerships
that are
based on
practice

From



To

Pathways
that are
narrow

Pathways that
are cross
institutional

From



To

Pathways
that are
highly
regulated

Pathways that
are genuinely
responsive to
the student's
personal
situation

From



To

Pathways that
are
circumscribed
by the
institution

Pathways
that are
communal
and
interactive

From



To

Uniform
approaches
to
assessment

Individualised
approaches to
assessment

From



To

Emphasis on
comparison
of students

Emphasis on
developments
with learning

From

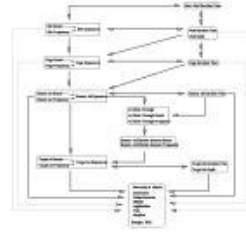


To

Assessment that
is set off from
curriculum and
teaching and
which is
-separate'.

Assessment that
is organic and
which occurs
naturally in the
environment.

From



To

Concepts
about
internal and
external
validity

Concepts
about
ecological
validity

(adapted from Judith Chapman)

Approach to Learning



- ✦ Learning together offers us a chance to look at reality through the eyes of others, instead of forcing us to process everything through our own limited vision. We can check and correct what we see from various vantage points, thus having a chance to come closer to getting it right.

(adapted from Parker Palmer)

Stages of Learning



- ✦ Day 1 What is my issue?
- ✦ Day 2 What am I depthing?
- ✦ Day 3 What is emerging?
- ✦ Day 4 What action am I going to take?

Learning Process



- ✦ Share our experience.
- ✦ Depth the concepts as we go.
- ✦ Focus on our individual interests, dreams and hopes within the overall framework.
- ✦ Debate a topic.
- ✦ Analyse a communal response.

Personal Learning Styles



- ✦ Journal
- ✦ Teacher's input
- ✦ Student input
- ✦ Other input e.g. video, dvd, cd, podcast
- ✦ Class discussion
- ✦ Small group discussion
- ✦ Personal reflection

Bibliography

Chapman, J (2002) -Lifelong Learning and Teacher Educationø A presentation to the workshops on -Revisioning the Education Professionø Australian Catholic University National, June - July

Palmer, P. (2002) in Wedge, E (2002) -Learning Moment: Co -operative leaning in the RE classroomø *Catholic School Studies*, May, p.31